



Wolverhampton CCG – Wolverhampton City Council Primary and Community Care Summary Plan: 2015/16

Vision: Home as Hub – building a neighbourhood approach which generates self-care, early identification and screening, integration and resilience of communities. Delivering a person focus to support for those who are living with frailty, and/ or complex health and care needs which promotes the maximisation of independence and enables people to remain in the home they are ordinarily resident for as long as possible. Integrating services, removing the barriers.

Purpose of the Programme:

To develop 3 Integrated Health and Social Care Community Neighbourhood Teams (CNTs) based in the 3 CCG localities – South East, South West and North East, supported by redesigned focus and care pathways.

To deliver primary care focussed, hard targeted interventions into care homes which support resilience building and prevent escalation.

To deliver the following outcomes:

Reducing unnecessary emergency admissions to hospital, reducing delayed transfers of care, reducing permanent placements in nursing and residential care homes, improving the patient experience, promoting self management, early intervention and prevention.

Individual Projects:

- 1) GP Care Home In-reach
- 2) Eclipse Roll-out
- 3) UTI Care Pathway
- 4) CNT's Design

Programme Commissioner Leads:

Andrea Smith – Wolverhampton CCG
Paul Smith – Wolverhampton City Council

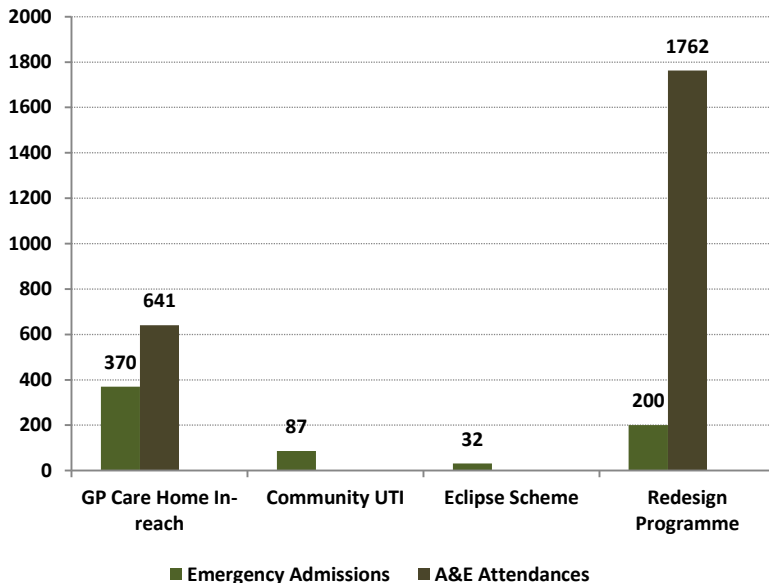
Programme Provider Leads:

Resham Khun-Khun
Zena Young - Royal Wolverhampton NHS Trust
David Raybould – Wolverhampton City Council
Angela Coxhead – Wolverhampton City Council

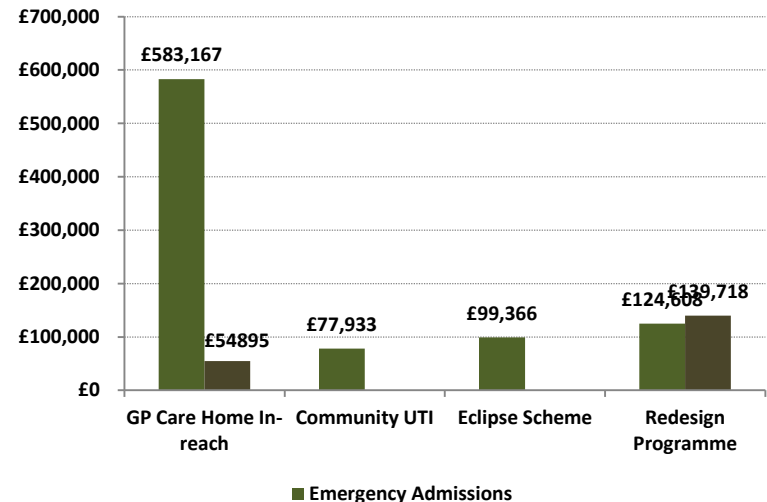
2015/16 Financial Value:
£22,054,368

Total Emergency Admission Reduction Impact:
£885,074
Total BCF Non P4P Metric Impact:
£106,000

Primary and Community Acute Activity Impact



Primary and Community Acute Financial Impact





Wolverhampton CCG – Wolverhampton City Council Intermediate Care Summary Plan: 2015/16

Vision: Developing and delivering Wolverhampton’s approach to effective alternatives to admission, effective discharge, and early discharge programmes through the full integration and rationalisation of Intermediate and therapy services and beds across health and social care.

Purpose of the Programme:

A material shift from care and support being delivered on an episodic basis to support, and interventions being wrapped around the individual to maximise the potential for independence

Development of a fully integrated approach to intermediate and reablement care which is community facing and supports person centred care, providing both alternatives to admission that are community facing and accelerated discharge with intensive, needs based support. This support will be delivered and coordinated on an integrated basis in the community

Designing and delivering an enhanced intermediate care function

Creating responsive support in a crisis

Maximising and consolidating the use of our resources, including our intermediate care beds

To deliver the following outcomes:

Reducing unnecessary emergency admissions to hospital, reducing delayed transfers of care, reducing permanent placements in nursing and residential care homes, improving the patient experience, promoting self management, early intervention and prevention.

Individual Projects:
 1) Home In-Reach Team
 2) Intermediate Care Redesign

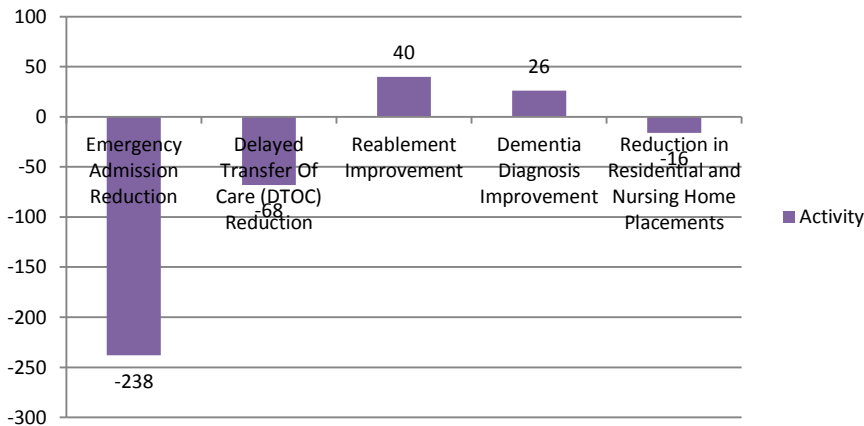
Programme Commissioner Leads:
 Angela Parkes – Wolverhampton CCG
 Paul Smith – Wolverhampton City Council

Provider Programme Leads:
 Wendy Worth – Royal Wolverhampton NHS Trust
 Zena Young - Royal Wolverhampton NHS Trust
 Tracey Chappell – Wolverhampton City Council

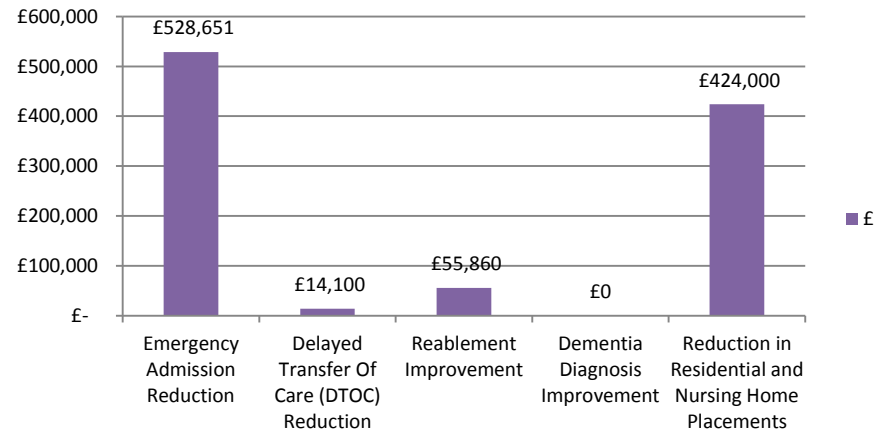
2015/16 Financial Value:
£32,168,889

Total Emergency Admission Reduction Impact:
£528,651
Total BCF Non P4P Metric Impact:
£493,960

Intermediate Care Acute Activity Impact



Intermediate Care Acute Financial Impact





Wolverhampton CCG – Wolverhampton City Council Dementia Summary Plan: 2015/16

Vision: Integrated Dementia Services – A person centred approach across all pathways and journeys that retains and maintains independent living, raising awareness and an improved quality of response. Integrating health and social care services prioritising timely diagnosis and early intervention, ensuring people living with dementia are engaged in advanced decisions about future care and treatment, enabling them to maintain their independence for as long as possible.

Purpose of the Programme:

To deliver care closer to home via Integrated Dementia services and community neighbourhood teams focusing on a localised and person centred approach, prioritising early intervention and timely diagnosis; maintaining and restoring independent living; ensuring the availability and mix of interventions whilst delivering transformational change across the health and social care economy

To deliver the following outcomes:

Reducing unnecessary emergency admissions to hospital, reducing delayed transfers of care, reducing permanent placements in nursing and residential care homes, improving the patient experience, promoting self management, early intervention and prevention.

Individual Projects:
Integrated Dementia Services

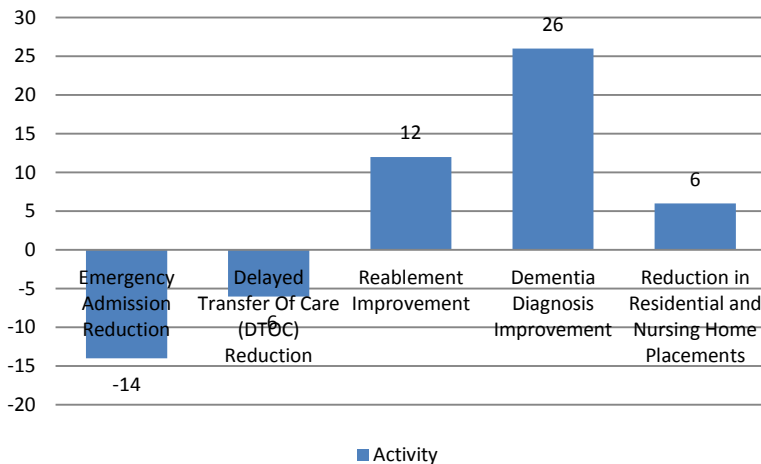
Programme Commissioner Leads:
Claire Morrissey – Wolverhampton CCG
Paul Smith – Wolverhampton City Council

Programme Provider Leads:
Paul Gibara – Black Country Partnership Foundation Trust
Alan Pugh – Wolverhampton City Council

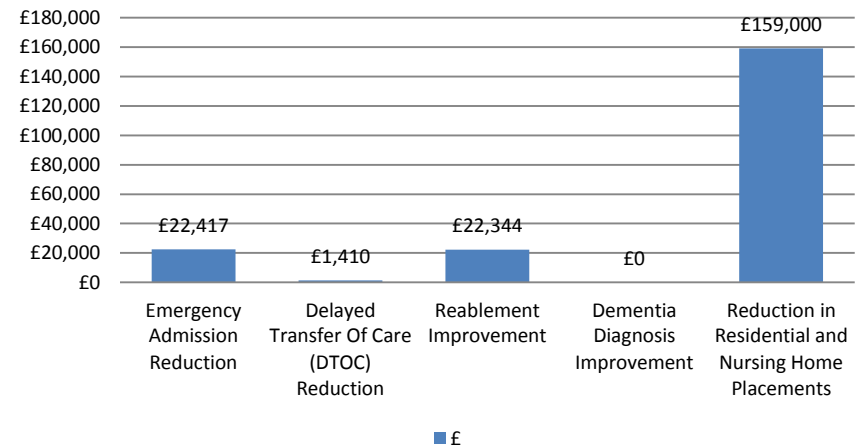
2015/16 Financial Value:
£4,233,120

Total Emergency Admission Reduction Impact:
£205,171
Total BCF Non P4P Metric Impact:
£182,754

Integrated Dementia Services Redesign Activity Impact



Integrated Dementia Services Acute Financial Impact





Wolverhampton CCG – Wolverhampton City Council Mental Health Summary Plan: 2015/16

Vision: The vision for mental health services and the aim of this proposal is to provide services to the people of Wolverhampton forward into 2019/20 that are sustainable, seamless, person centred, with support delivered as close to home as possible that maximise opportunities for independence to be retained. In Wolverhampton are committed to the strategic approach of **One Ambition, Working as One, for Every One.**

Purpose of the Programme:

Developing and delivering Wolverhampton's approach to fully integrated functional mental health community services, and the development of community facing pathways.

The scope for the workstream includes, enhancing the development of fully integrated care pathways for mental health, including where crisis and urgent care needs occur, establishing a recovery pathway for OOA placements which ensures care is delivered as close to home as possible, achieving parity of esteem for those with mental health needs, approaches to supporting those who no longer have enhanced needs and mental health awareness, anti-stigma and self-help development.

To deliver the following outcomes:

Reducing unnecessary emergency admissions to hospital, reducing delayed transfers of care, reducing permanent placements in nursing and residential care homes, improving the patient experience, promoting self management, early intervention and prevention.

Individual Projects:

- 1) Planned Care
- 2) Urgent Care

Programme Commissioner Leads:

Sarah Fellows – Wolverhampton CCG
Kathy Roper – Wolverhampton City Council

Provider Programme Leads:

Debbie Mason – Black Country Partnership Foundation Trust
June Pickersgill – Wolverhampton City Council

2015/16 Financial Value:

£8,210,846

Total Emergency Admission Reduction

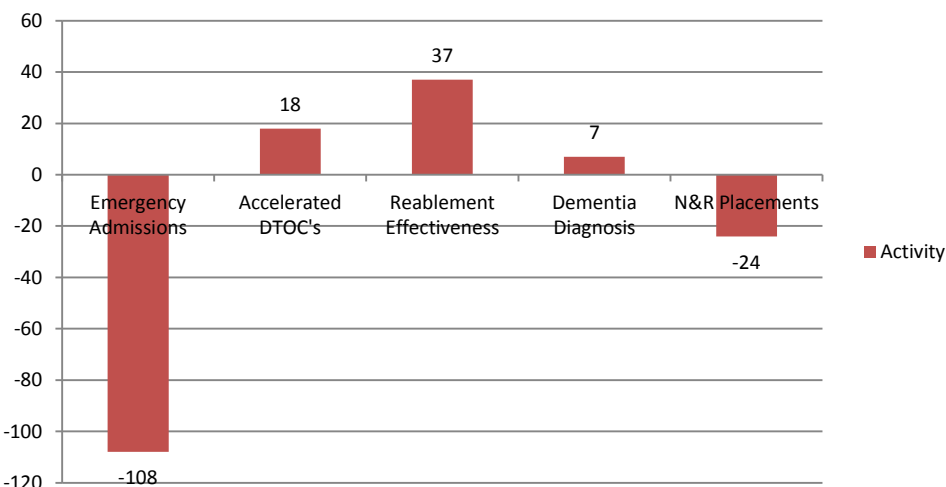
Impact:

£228,928

Total BCF Non P4P Metric Impact:

£709,124

Mental Health Acute Activity Impact



Mental Health Acute Financial Impact

